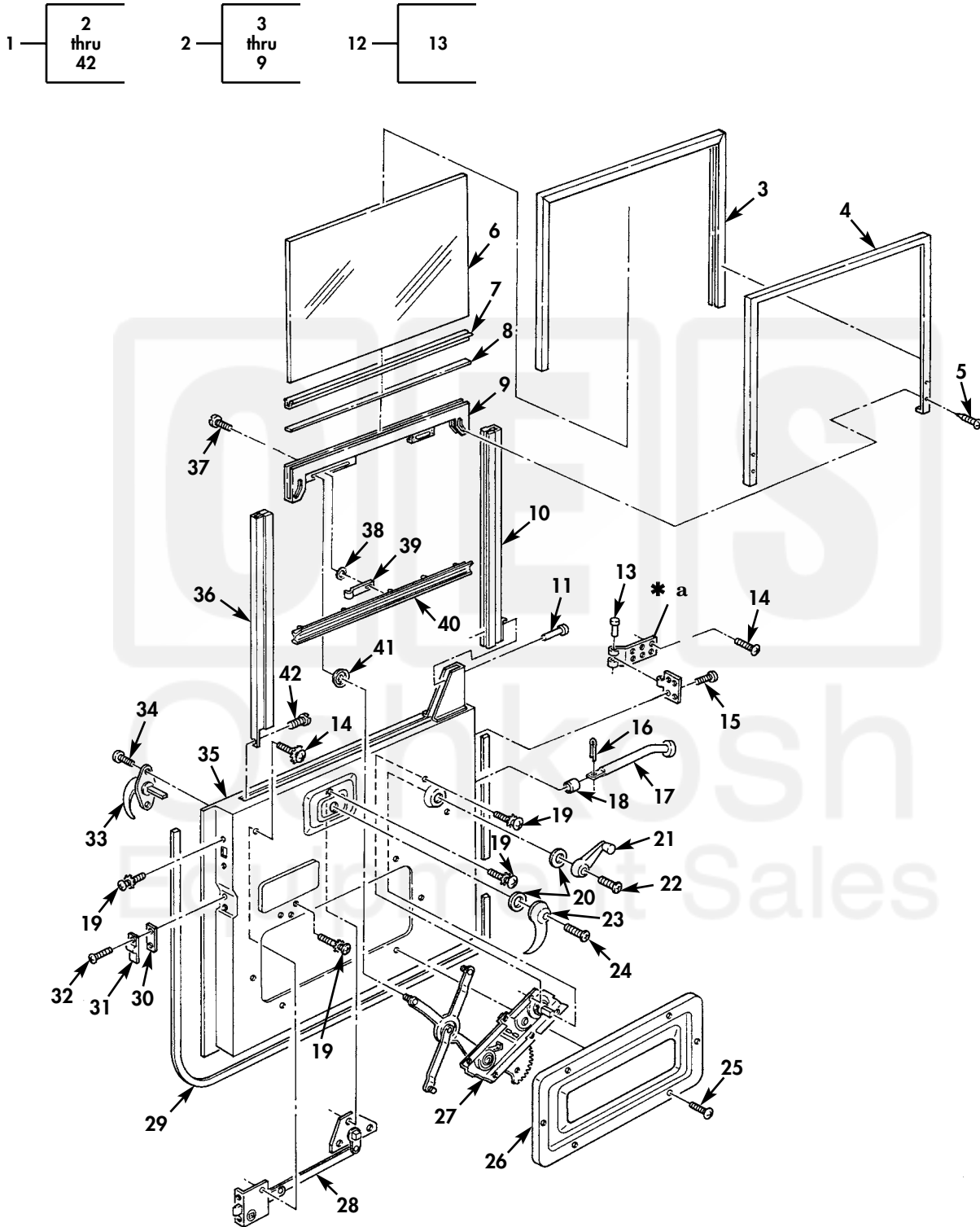


FIELD AND SUSTAINMENT MAINTENANCE
REPAIR PARTS AND SPECIAL TOOLS LIST

TRUCK, CARGO: 2-1/2-TON, 6X6, M44A2 SERIES TRUCKS (MULTIFUEL)



* a PART OF ITEM 12

Figure 107. Door and Window Assembly.

| (1) ITEM NO | (2) SMR CODE | (3) NSN | (4) CAGEC | (5) PART NUMBER | (6) DESCRIPTION AND USABLE ON CODE (UOC) | (7) QTY |
|-------------------|--------------------|------------------|--------------|-----------------------|--|------------|
| | | | | | GROUP 18 BODY,CAB,AND HOOD 1801 BODY,CAB,AND HOOD | |
| | | | | | FIG. 107 DOOR AND WINDOW ASSEMBLY | |
| 1 | PAOOO | 2510-00-737-3294 | 19207 | 7373294 | DOOR,VEHICULAR R.H..... | 1 |
| 1 | PAOOO | 2510-00-737-3293 | 19207 | 7373293 | DOOR,VEHICULAR L.H..... | 1 |
| 2 | PAOFF | 2510-00-650-1015 | 19207 | 7529305 | .FRAME,STRUCTURAL,VE R.H..... | 1 |
| 2 | PAOFF | 2510-00-674-4487 | 72286 | B410-1L | .FRAME,STRUCTURAL,VE L.H..... | 1 |
| 3 | PAFZZ | 9390-00-737-3300 | 19207 | 7373300 | ..NONMETALLIC CHANNEL..... | 1 |
| 4 | PAFZZ | 2510-00-737-3295 | 19207 | 7373295 | ..FRAME,WINDOW,VEHICU..... | 2 |
| 5 | PAFZZ | 5305-00-057-7164 | 96906 | MS24615-24 | ..SCREW,TAPPING..... | 4 |
| 6 | PAFZZ | 9340-01-047-4100 | 19207 | 7529307 | ..GLASS,LAMINATED..... | 1 |
| 7 | PAFZZ | 9390-00-737-3301 | 19207 | 7373301 | ..NONMETALLIC CHANNEL..... | 1 |
| 8 | PAFZZ | 2510-00-179-5708 | 19207 | 10906350 | ..FILLER,CAB DOOR..... | 1 |
| 9 | PAFZZ | 2540-00-737-3296 | 19207 | 7373296 | ..CHANNEL,LIFT,VEHICL L.H..... | 1 |
| 9 | PAFZZ | 2540-00-737-3297 | 19207 | 7373297 | ..CHANNEL,LIFT,VEHICL R.H..... | 1 |
| 10 | PFOZZ | 2540-00-737-3298 | 16662 | 7373298 | .CHANNEL,LIFT,VEHICL..... | 2 |
| 11 | PAOZZ | 5320-00-262-6492 | 11083 | 7B5049 | .RIVET,TUBULAR..... | 2 |
| 12 | PFOZZ | 5340-00-737-3285 | 19207 | 7373285 | .HINGE,BUTT..... | 4 |
| 13 | PAOZZ | 5315-00-338-1621 | 19207 | 7539131 | ..PIN,STRAIGHT,HEADED..... | 1 |
| 14 | PAOZZ | 5305-00-078-7021 | 19207 | 8743911 | .SCREW,CAP,SOCKET HE..... | 16 |
| 15 | PAOZZ | 5305-00-144-1514 | 19207 | 8743917 | .SCREW,MACHINE..... | 16 |
| 16 | PAOZZ | 5315-00-059-0205 | 80205 | MS24665-490 | .PIN,COTTER..... | 2 |
| 17 | PAOZZ | 2510-01-084-9633 | 19207 | 8757842-1 | .ROD,DOOR CHECK,VEHI..... | 2 |
| 18 | PAOZZ | 2510-00-057-1630 | 19207 | 8757843 | .PAD,DOOR CHECK..... | 2 |
| 19 | PAOZZ | 5305-01-242-5953 | 24617 | 455176 | .SCREW,ASSEMBLED WAS..... | 32 |
| 20 | PAOZZ | 5330-00-621-2565 | 19207 | 7397852 | .GASKET..... | 4 |
| 21 | PAOZZ | 2540-00-737-3304 | 19207 | 7975607 | .HANDLE,WINDOW REGUL..... | 2 |
| 22 | PAOZZ | 5305-00-145-0602 | 19207 | 8743910 | .SCREW,CAP,SOCKET HE..... | 2 |
| 23 | PAOZZ | 2540-00-797-5609 | 19207 | 7975609 | .HANDLE,DOOR,VEHICUL..... | 2 |
| 24 | PAOZZ | 5305-00-088-1302 | 19207 | 8743909 | .SCREW,CAP,SOCKET HE..... | 2 |
| 25 | PAOZZ | 5305-00-855-0961 | 80205 | MS24629-35 | .SCREW,TAPPING..... | 12 |
| 26 | PFOZZ | 5340-00-693-0604 | 19207 | 7373299 | .COVER,ACCESS..... | 2 |
| 27 | PFOZZ | 2540-00-693-0602 | 19207 | 7373289 | .REGULATOR,VEHICLE W L.H..... | 1 |
| 27 | PFOZZ | 2540-00-693-0603 | 89346 | 101081R91 | .REGULATOR,VEHICLE W R.H..... | 1 |
| 28 | PAOZZ | 2540-00-737-3276 | 19207 | 7373276 | .LATCH,DOOR,VEHICULA L.H..... | 1 |
| 28 | PAOZZ | 2540-00-737-3277 | 19207 | 7373277 | .LATCH,DOOR,VEHICULA R.H..... | 1 |
| 29 | PAOZZ | 9390-01-285-9623 | 19207 | 12368265 | .NONMETALLIC SPECIAL..... | 2 |
| 30 | PAOZZ | 5365-01-129-0399 | 19207 | 7529300 | .SPACER,PLATE..... | 2 |
| 31 | PAOZZ | 2540-00-040-2129 | 19207 | 8329899 | .WEDGE,DOOR DOVETAIL..... | 2 |
| 32 | PAOZZ | 5305-00-696-5285 | 24617 | 187995 | .SCREW,ASSEMBLED WAS..... | 1 |
| 33 | PFOZZ | 2540-00-741-0715 | 19207 | 7410715 | .HANDLE,DOOR,VEHICUL..... | 2 |
| 34 | PAOZZ | 5305-00-483-2339 | 26233 | M34AS1032R12C | .SCREW,CAP,SOCKET HE..... | 4 |
| 35 | XAOZZ | | 19207 | 7397674 | .DOOR,VEHICULAR R.H..... | 1 |
| 35 | PAOZZ | 2510-00-737-3293 | 19207 | 7373293 | .DOOR,VEHICULAR L.H..... | 1 |
| 36 | PFOZZ | 2540-00-737-3286 | 19207 | 7373286 | .CHANNEL,LIFT,VEHICL..... | 2 |
| 37 | PAOZZ | 5305-00-995-3569 | 96906 | MS24629-22 | .SCREW,TAPPING..... | 2 |
| 38 | PAOZZ | 5310-00-209-0788 | 96906 | MS35335-30 | .WASHER,LOCK..... | 4 |
| 39 | PAOZZ | 2510-01-022-5783 | 19207 | 11682321 | .BRACKET,CAB DOOR..... | 1 |
| 40 | PAOZZ | 2510-00-737-3287 | 19207 | 7373287 | .WEATHERSTRIP..... | 2 |
| 41 | PAOZZ | 2540-00-562-0422 | 19207 | 7529309 | .FASTENER,REGULATOR..... | 4 |
| 42 | PAOZZ | 5305-00-442-3217 | 80205 | MS24629-66 | .SCREW,TAPPING..... | 2 |

END OF FIGURE